

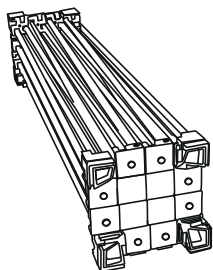
# Backlit Popup

## user guide



### Parts (Not to scale)

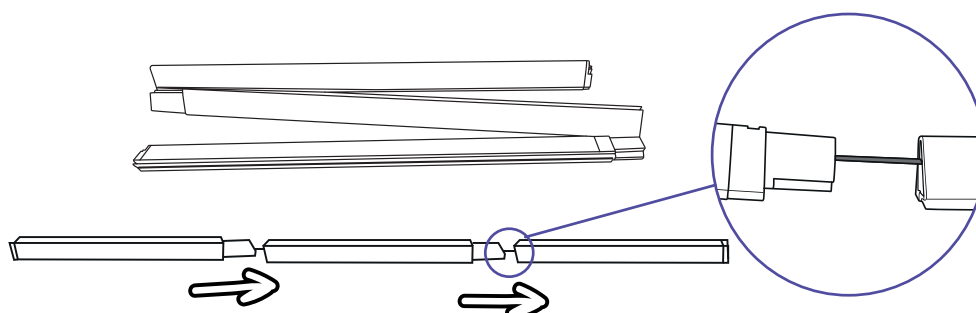
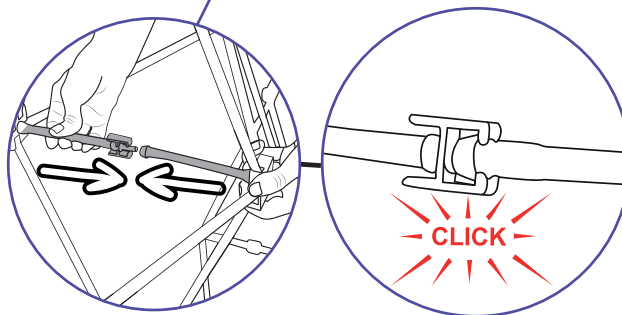
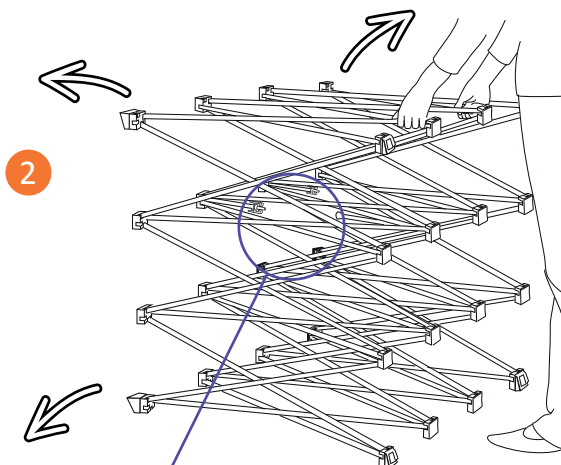
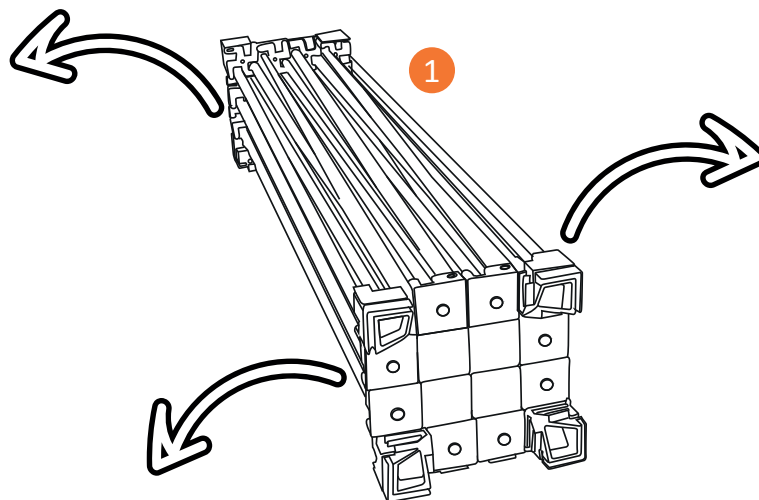
Frame



Channel Bars (x8)

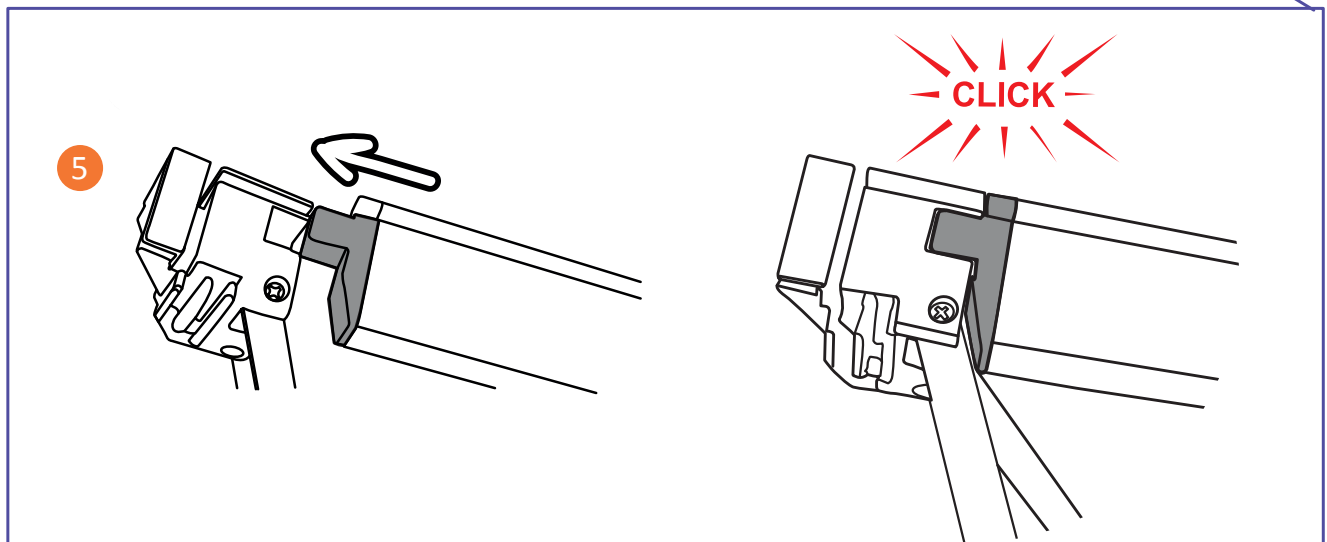
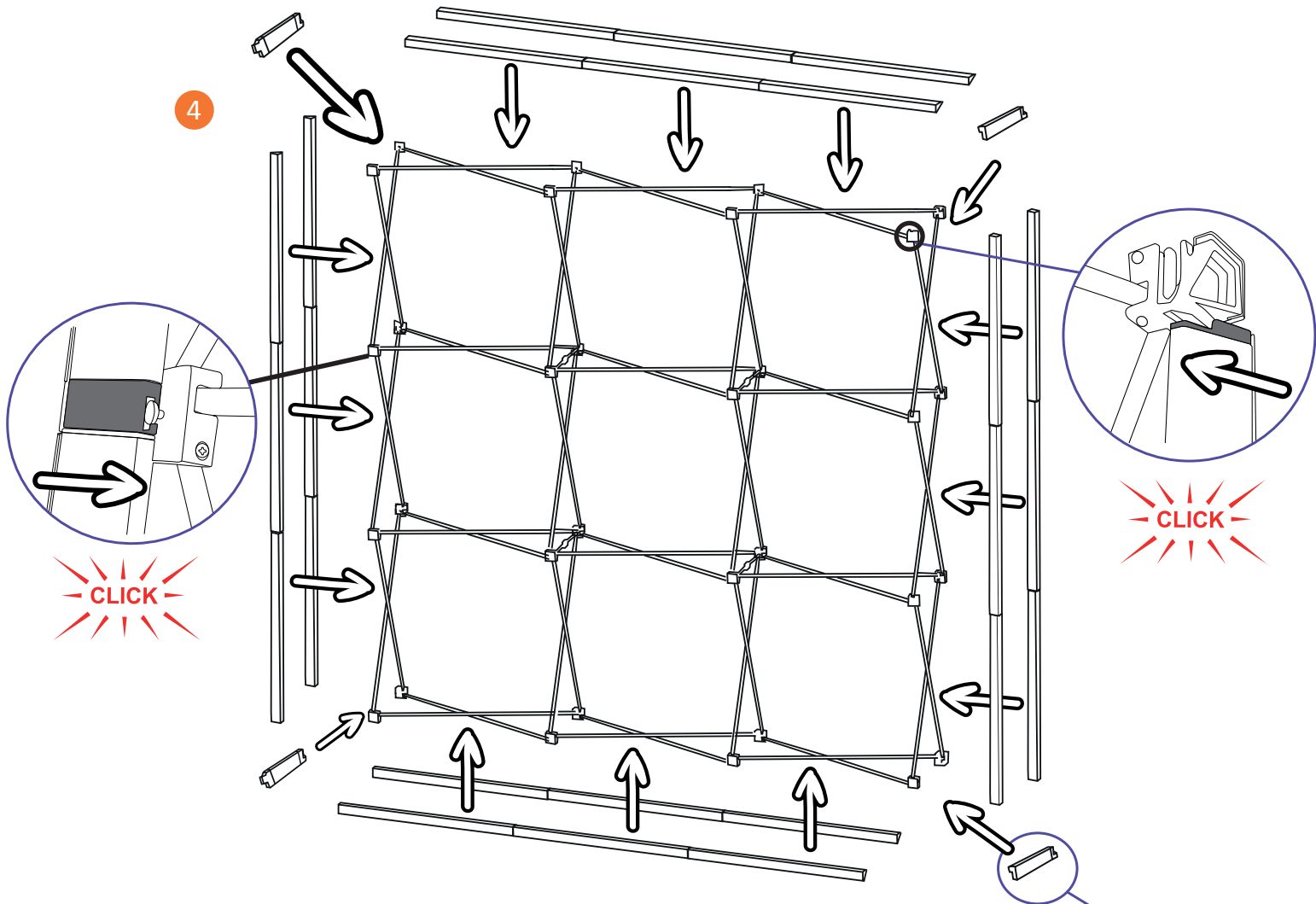


Side Channel Bars (x4)



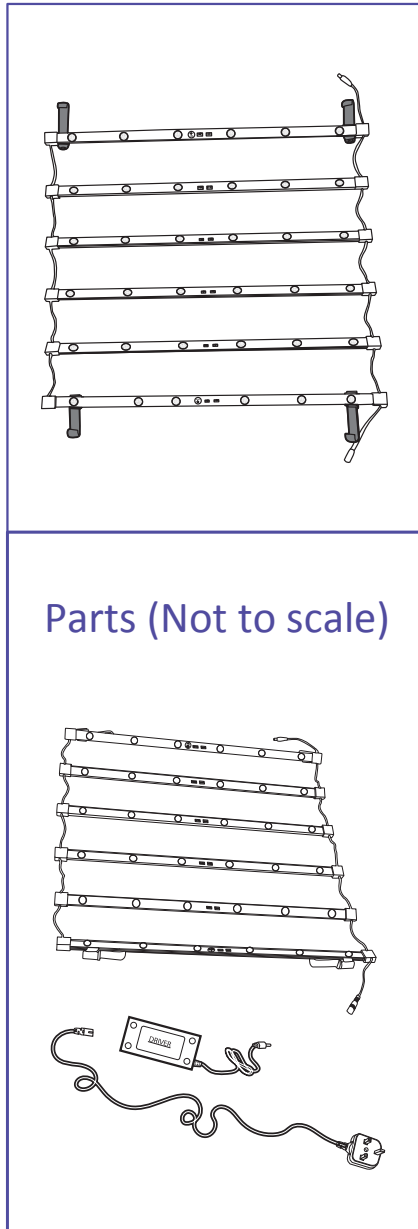
# Backlit Popup

user guide

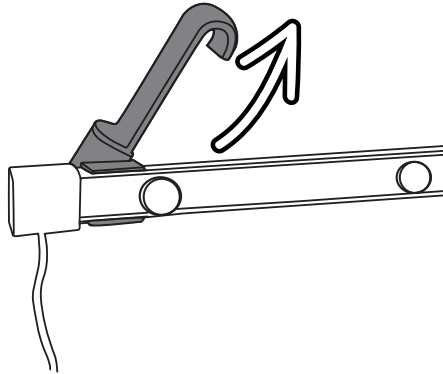


# Backlit LED Curtains

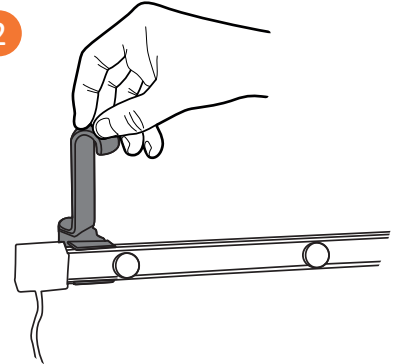
## user guide



1 TWIST

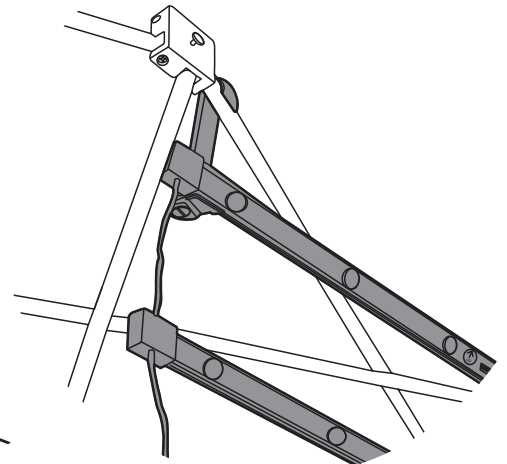
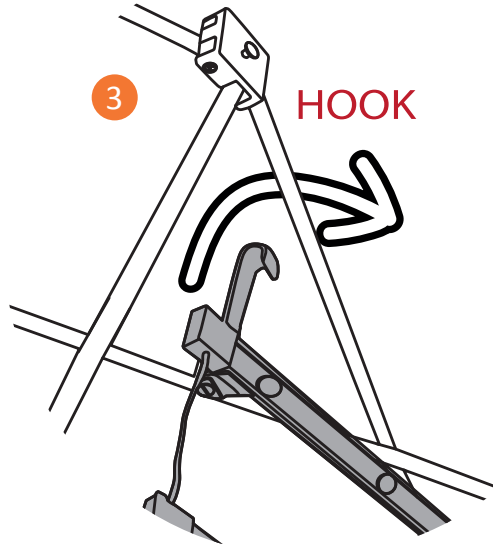


2



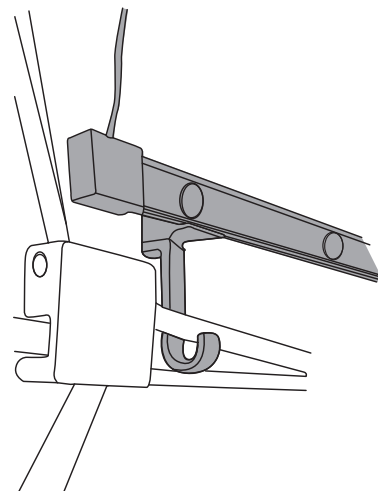
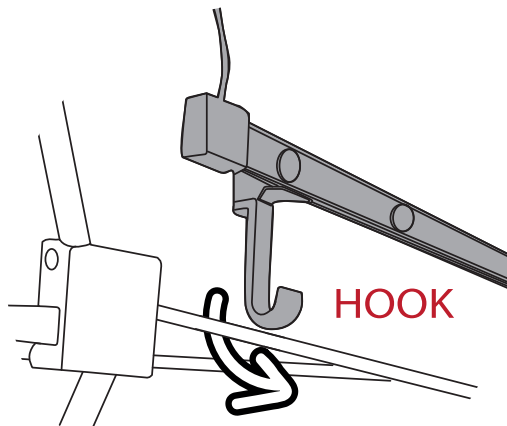
3

HOOK



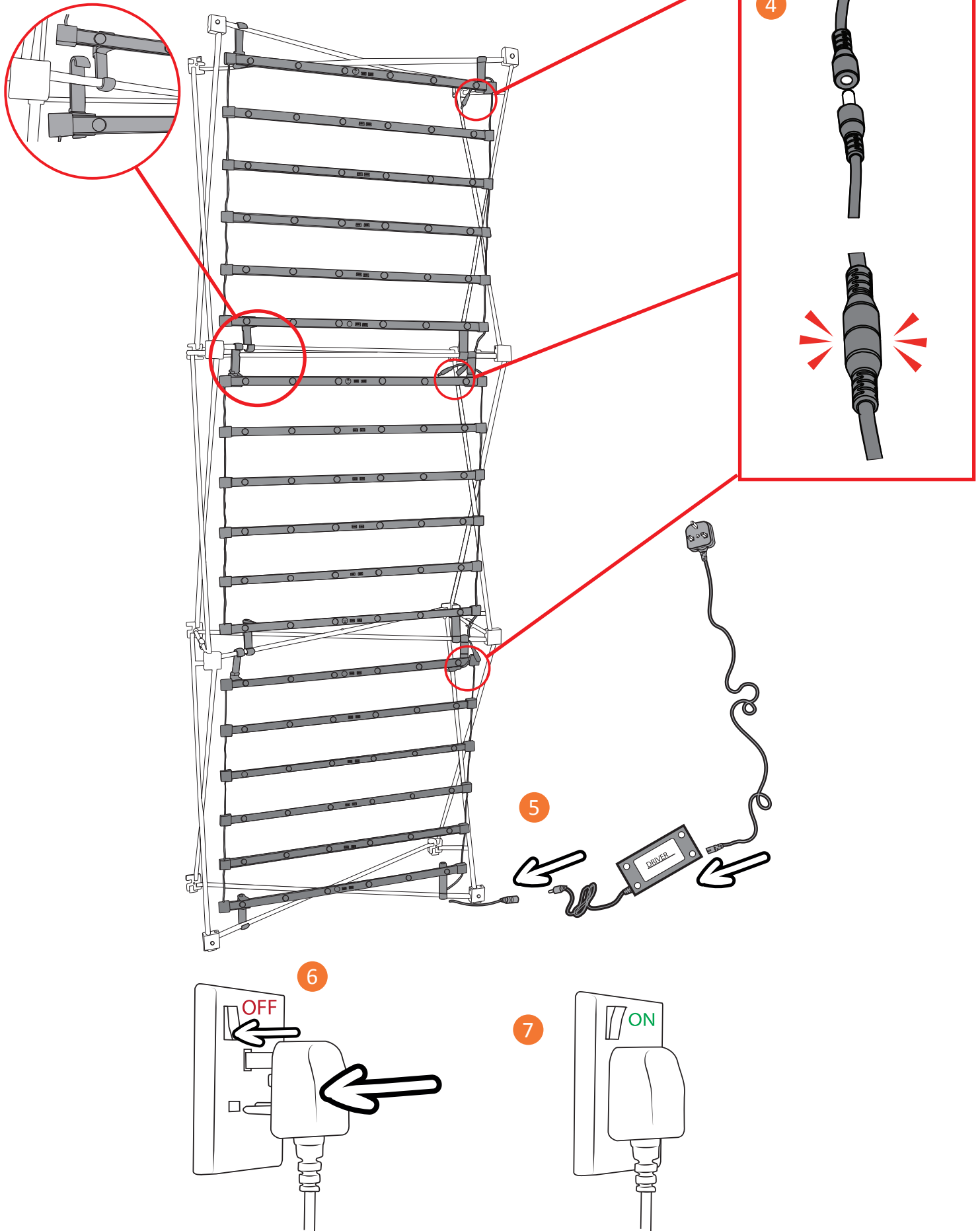
4

HOOK



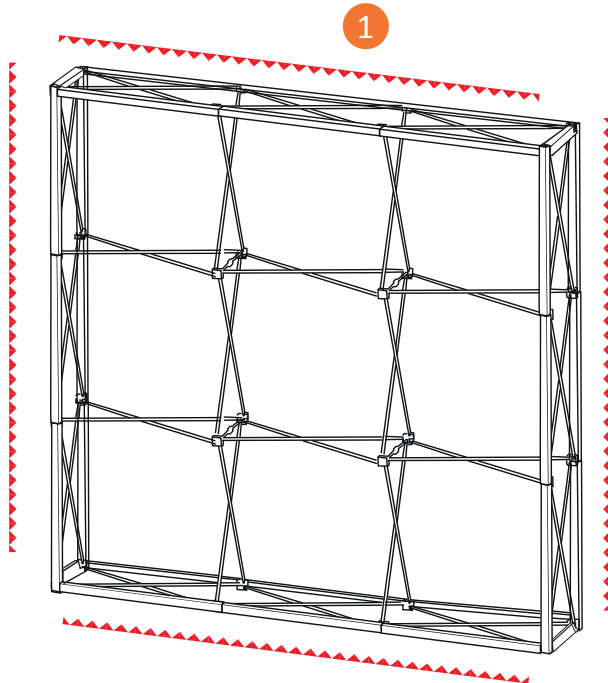
# Backlit Popup

user guide



# Backlit Popup

## attaching graphics



NOTE: Locate the Silicon Edge Gasket into the appropriate channel

