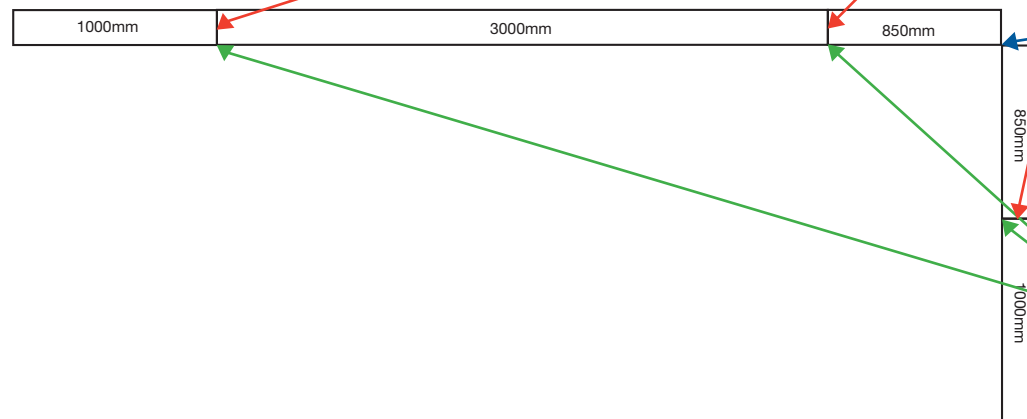


5x2m L-shape Lightbox Exhibition Stands User Instructions

This stand is made up of the following connected frames:

- 2 x 850mm wide frames
- 2 x 1000mm wide frame
- 1 x 3000mm wide frame

Assemble individual frames & position as below. Link frames using the connectors shown right. Refer to page 8 for linking the LED lighting strips to the transformers



FRAME CONNECTORS INCLUDED IN YOUR PACKAGE:

- A 3 x Straight frame connectors** – Use these to join lightboxes in a straight line. These secure at the top of the frame.



- B 3 x 90 degree frame connectors** – Use these to connect two lightboxes together in an L-shape at the rear of the frame

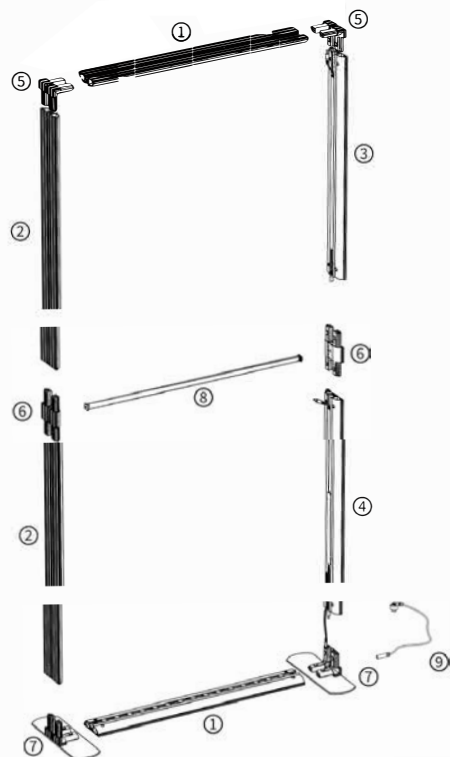
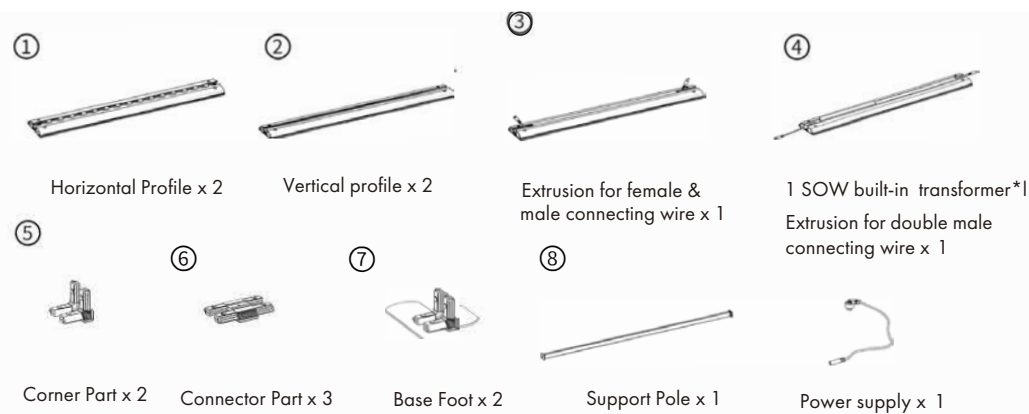


- C Clear plastic joining clips** – These clips secure frames together along the front joins. Push-fit several clips per join



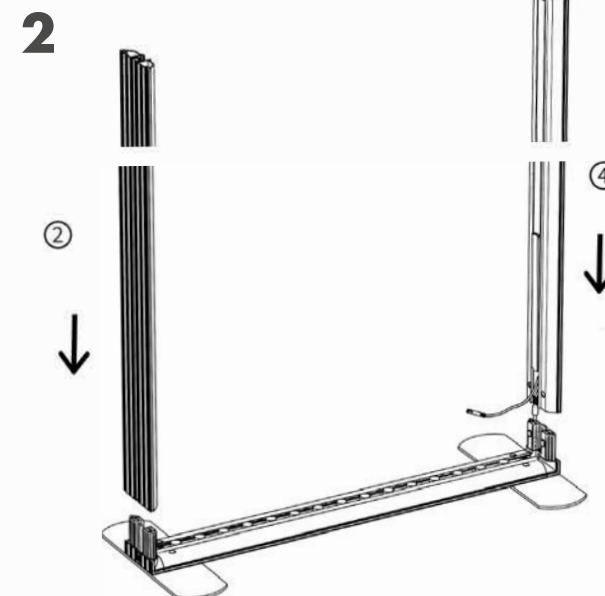
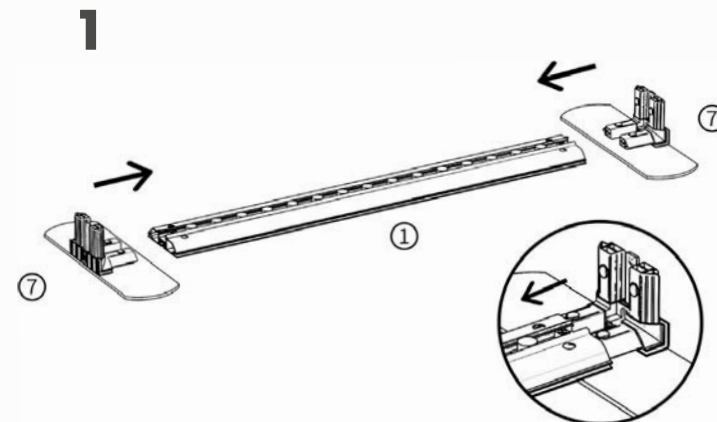
Please refer to page 8 for advice on linking lighting strips to transformers

Lightbox Exhibition Stands User Instructions - 850mm & 1000mm (w)



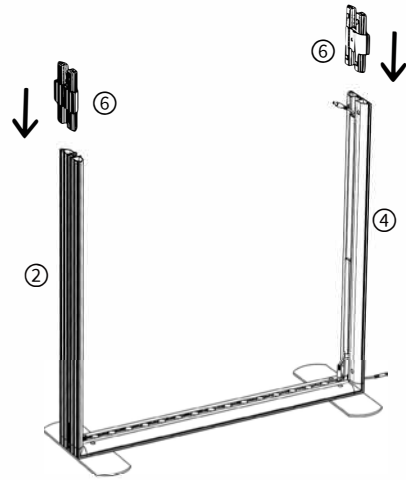
ELECTRIC
CIRCUIT LAYOUT

E: sales@popup-stands-uk.co.uk
T: 0116 2047757

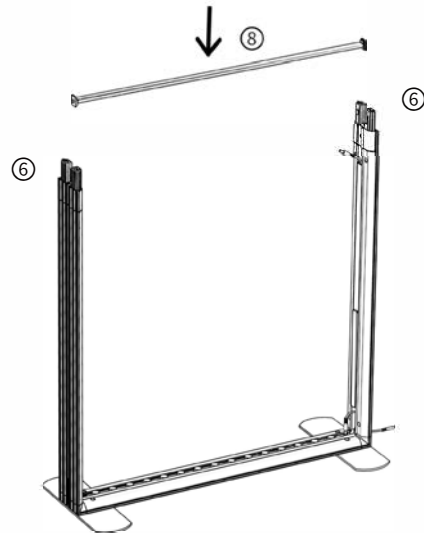


Lightbox Exhibition Stands User Instructions - 850mm & 1000mm (w)

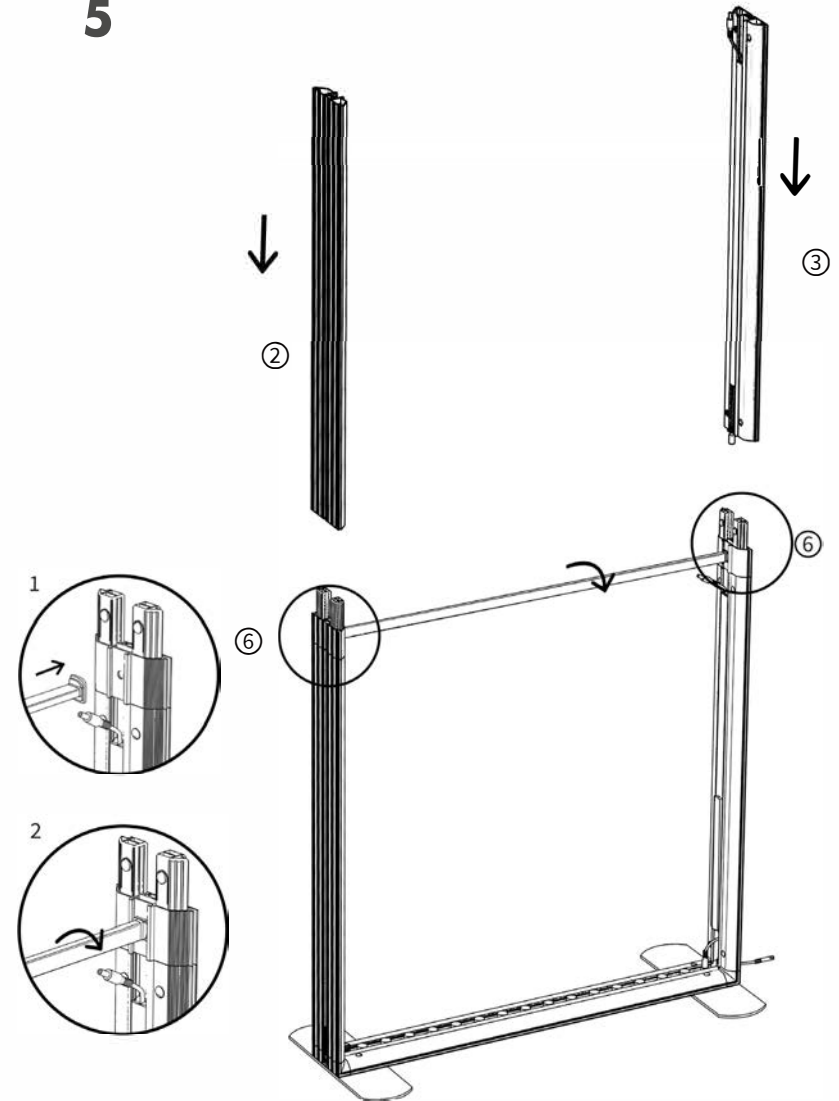
3



4

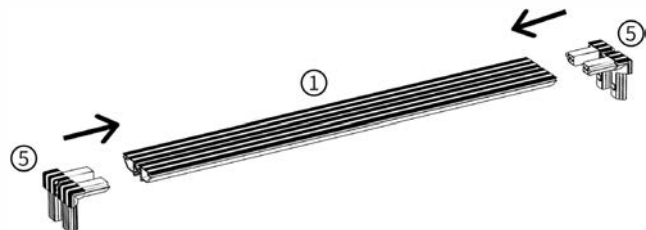


5

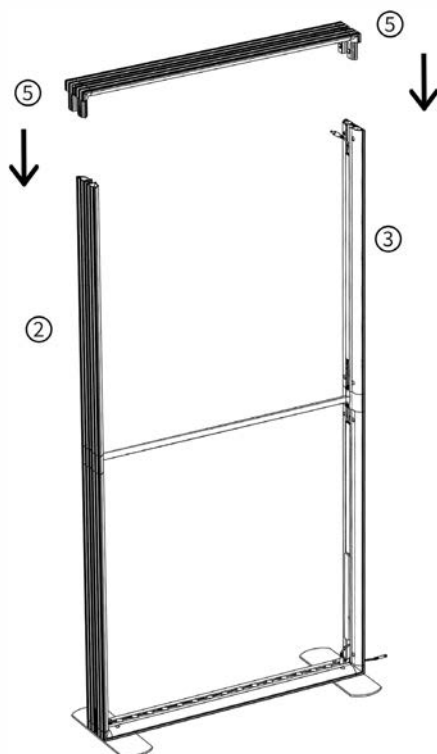


Lightbox Exhibition Stands User Instructions - 850mm & 1000mm (w)

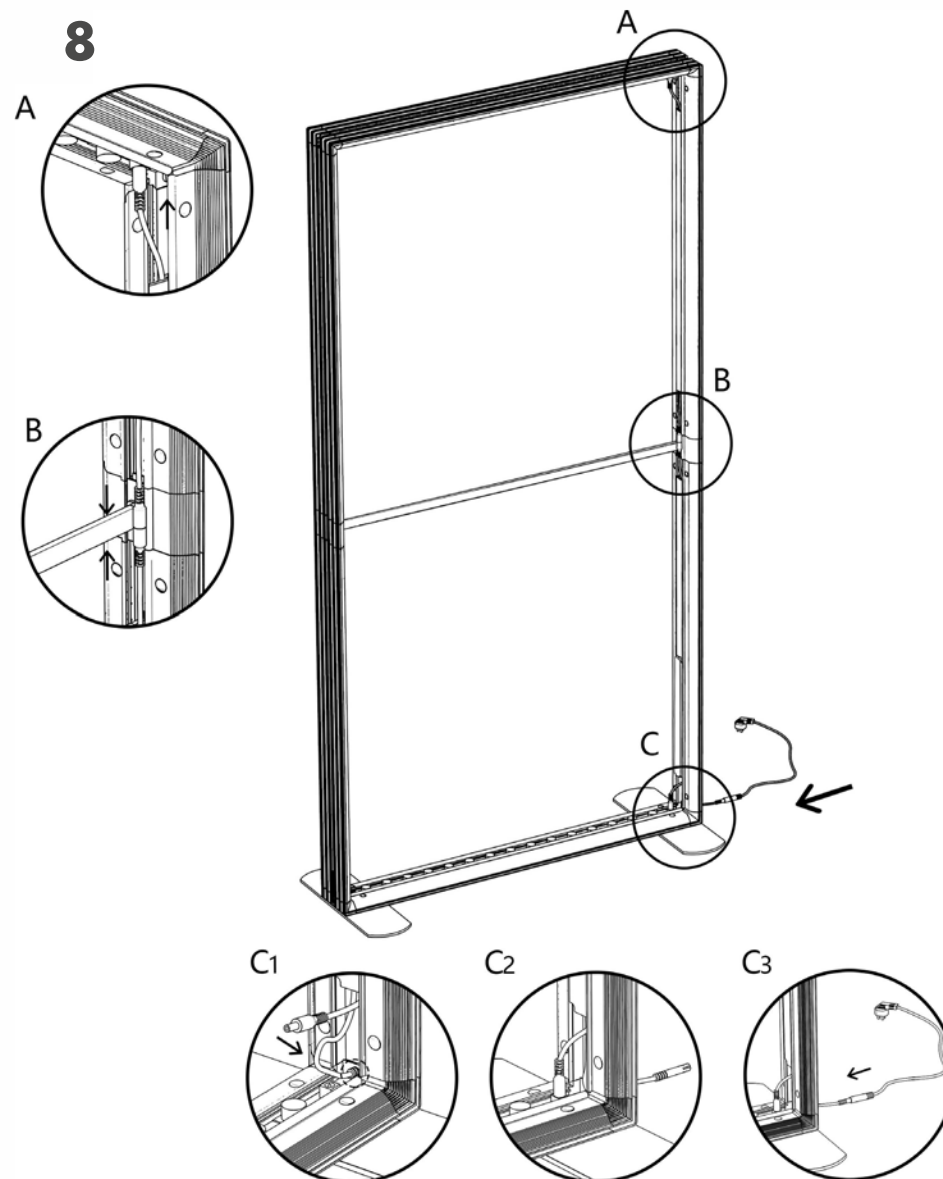
6



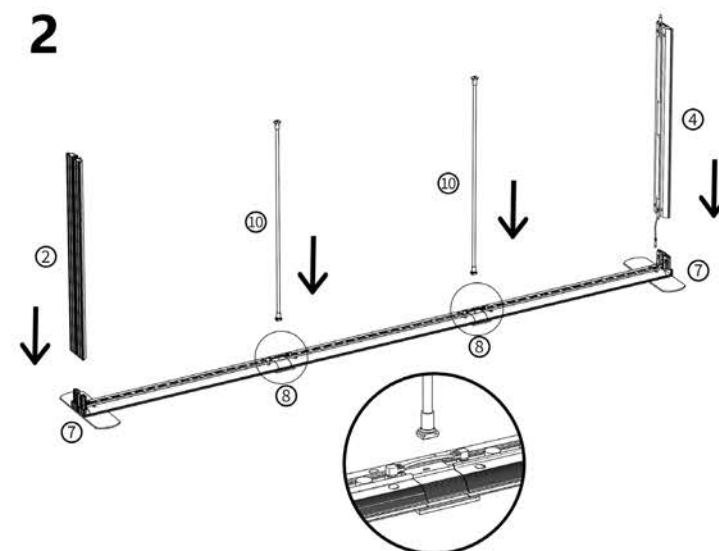
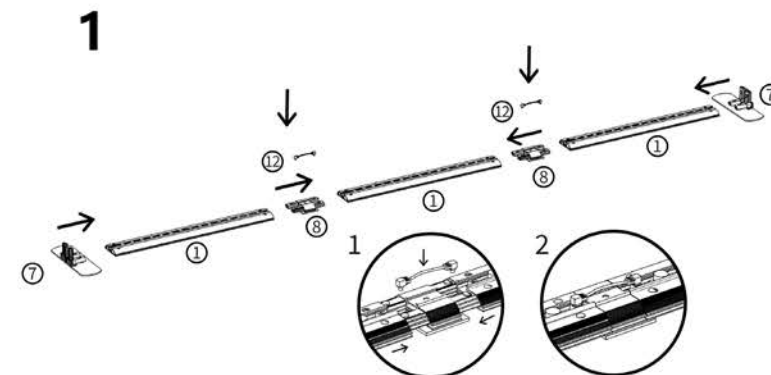
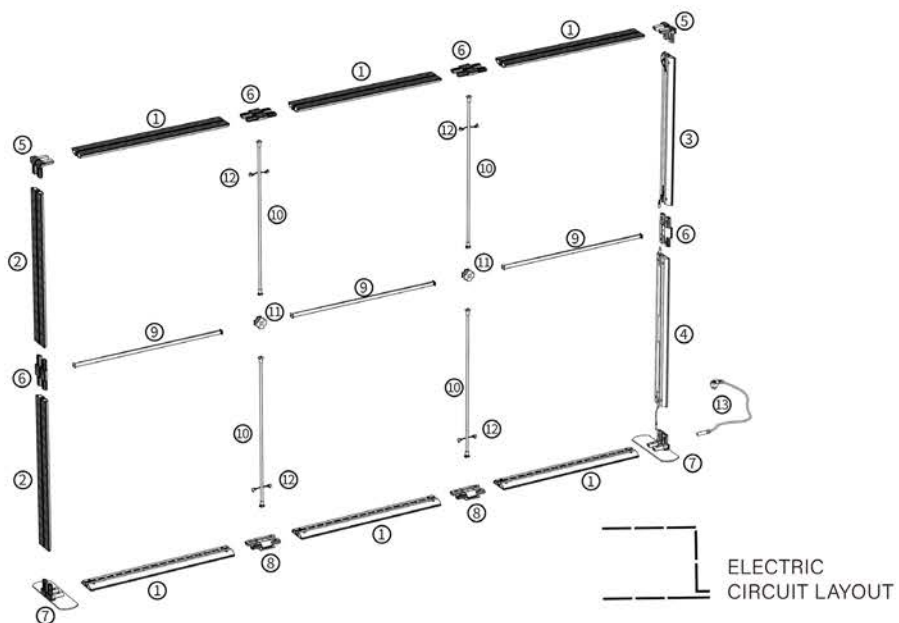
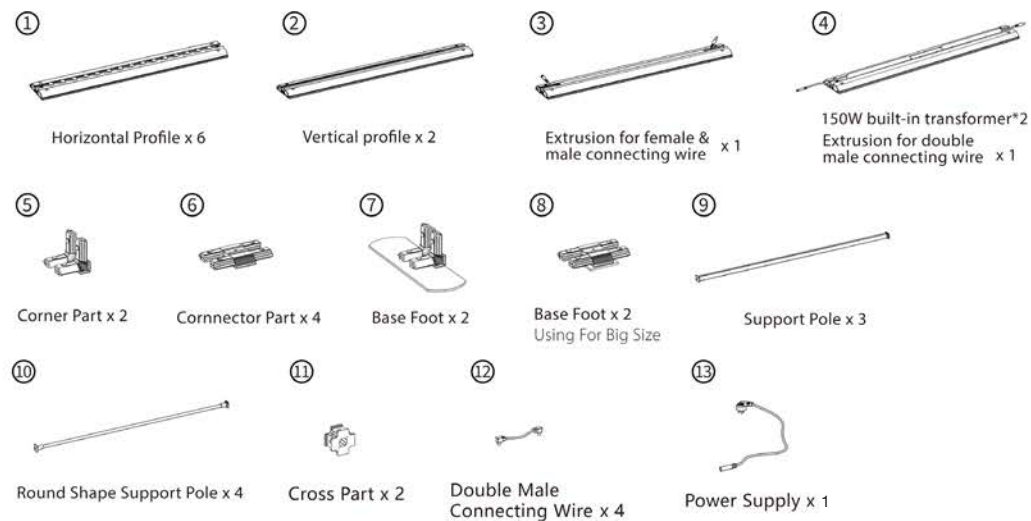
7



8

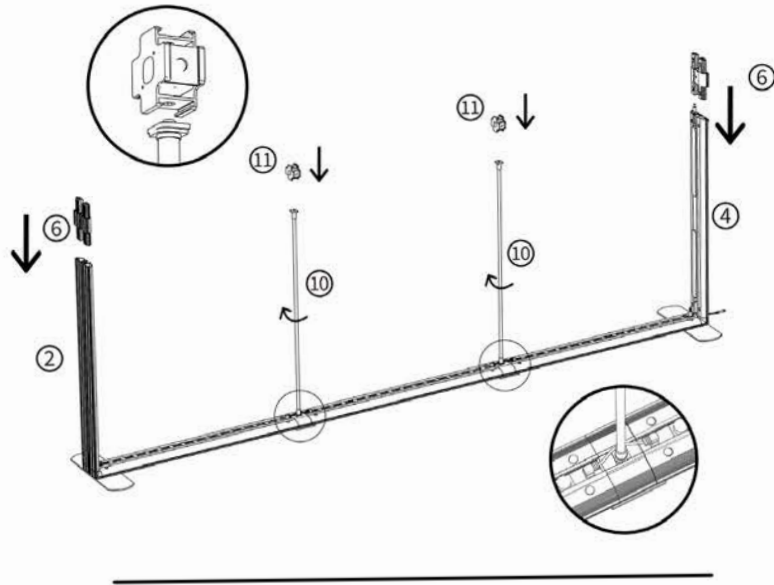


Lightbox Exhibition Stands User Instructions - 3000mm (w)

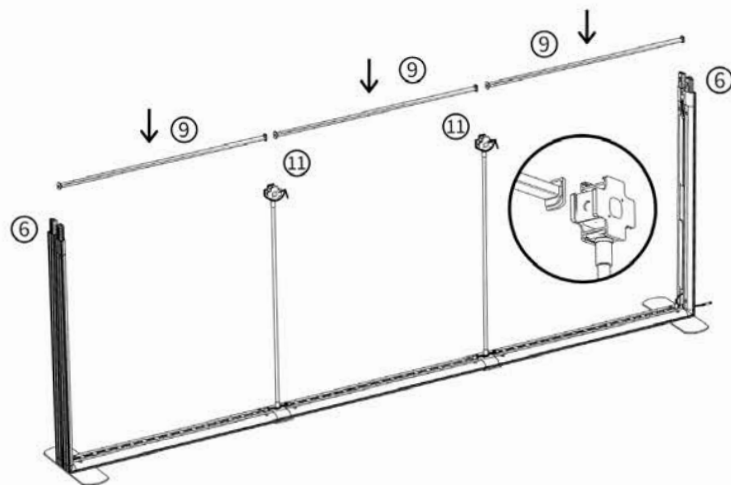


Lightbox Exhibition Stands User Instructions - 3000mm (w)

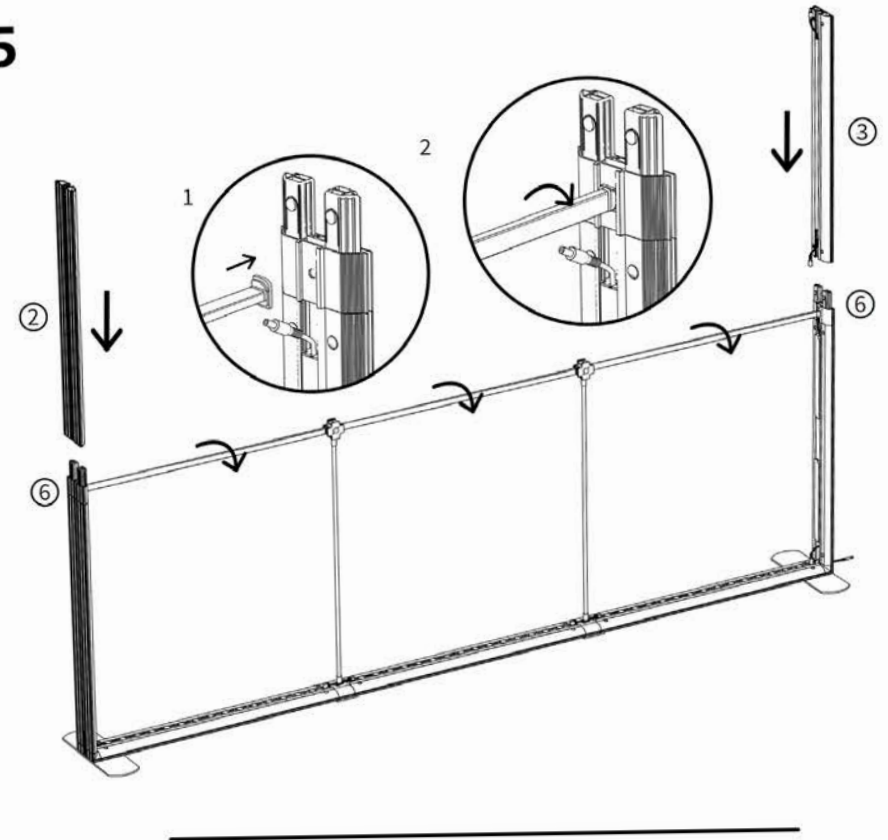
3



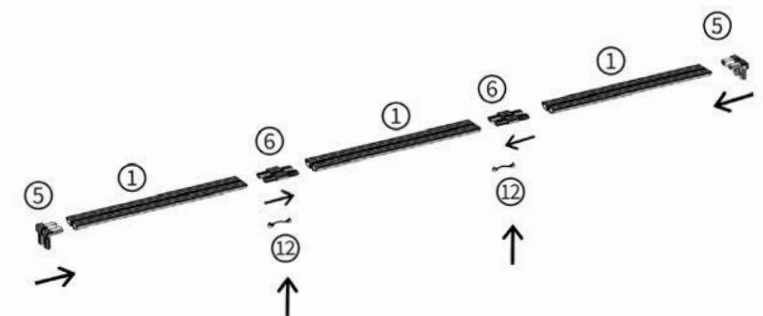
4



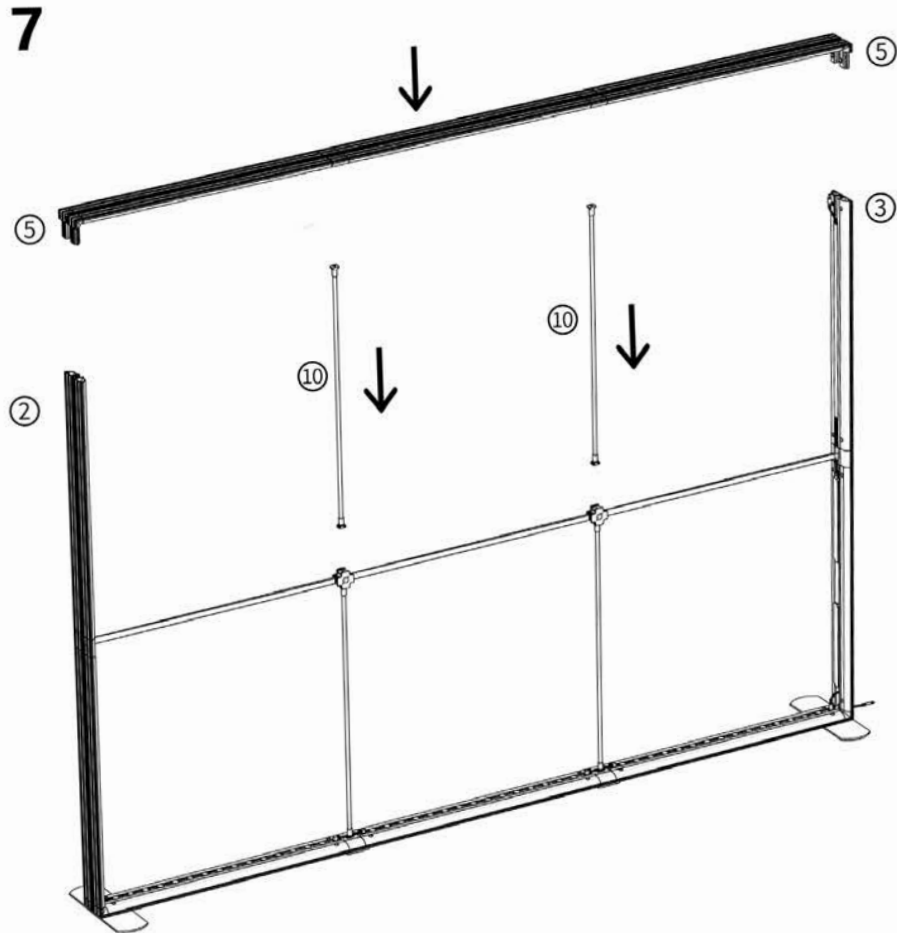
5



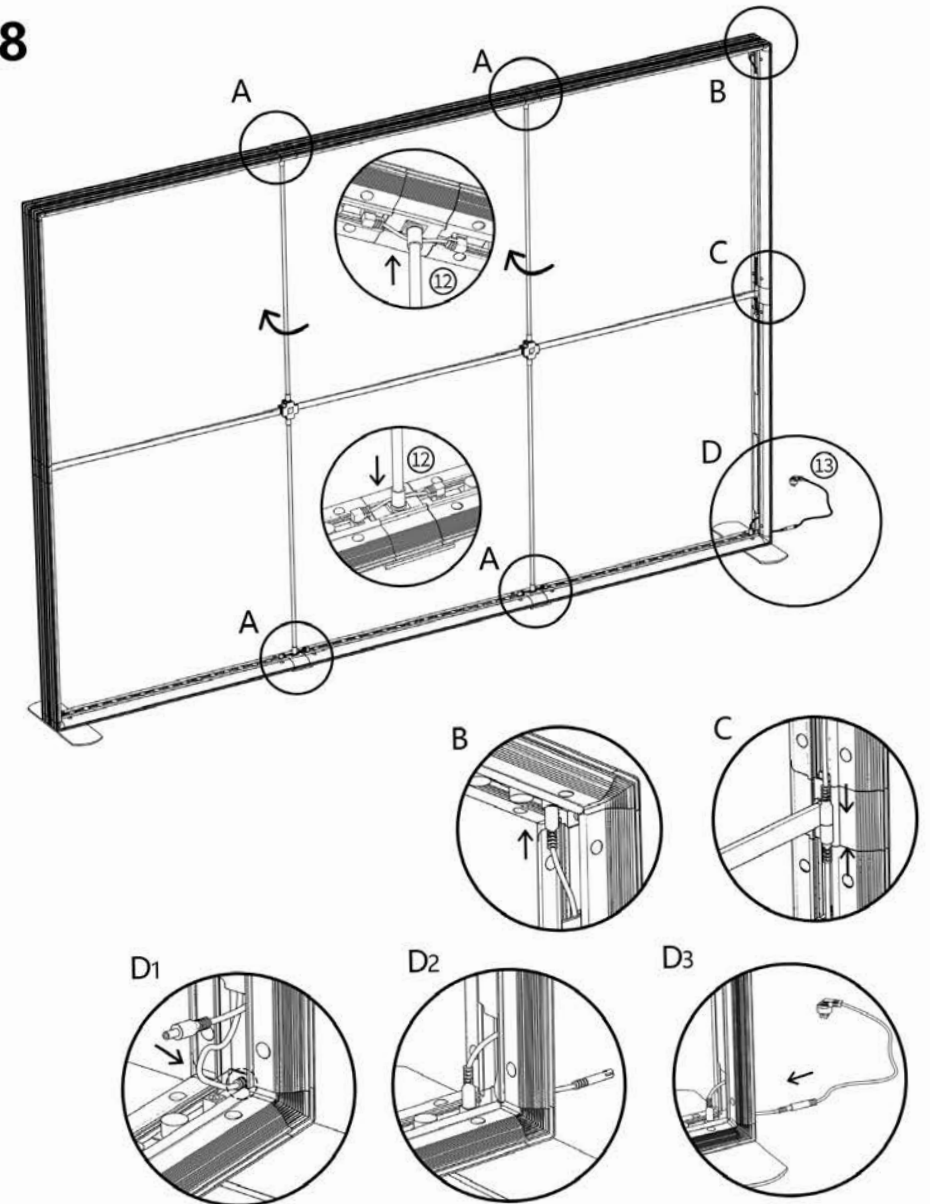
6



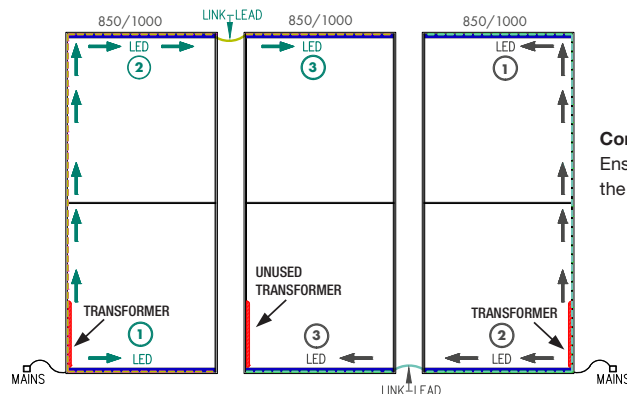
Lightbox Exhibition Stands User Instructions - 3000mm (w)



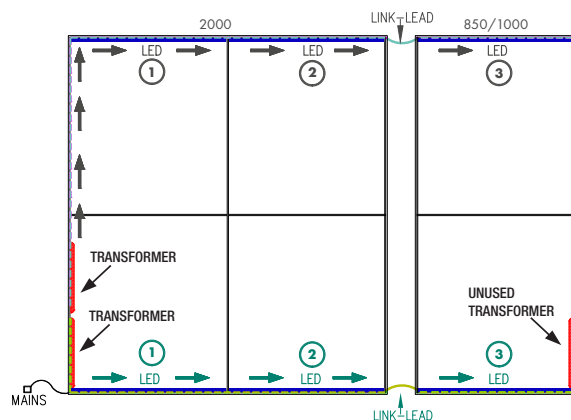
8



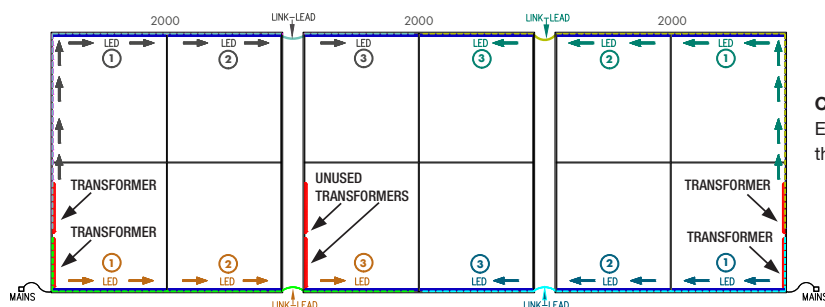
Connecting LED Lighting Strips - Lightbox Exhibition Stands



Connect 850mm and 1000mm together:
Ensure your link leads are connected in the places illustrated.



Connect 850 / 1000 and 2000mm together:
Ensure your link leads are connected in the places illustrated.



Connect 2000mm together:
Ensure your link leads are connected in the places illustrated.

Important Info:

Each transformer supports up to 3 linked LED lighting strips if mixing 850 & 1000mm sizes (supports 4 if all 850mm). All lightboxes are supplied with the necessary joining cables as standard. See setup illustrations below..

Note:

The 2000 and 3000mm wide lightboxes are supplied with a pair of transformers powered by one plug (2x circuits of max 150w each).



Transformers max 150w each
850mm long LED strip - 36w each
1000mm long LED strip - 45w each